

You need out your Warm Up & Agenda

Homework: Triangles

Warm Up:

1) Fill in the remaining angles:

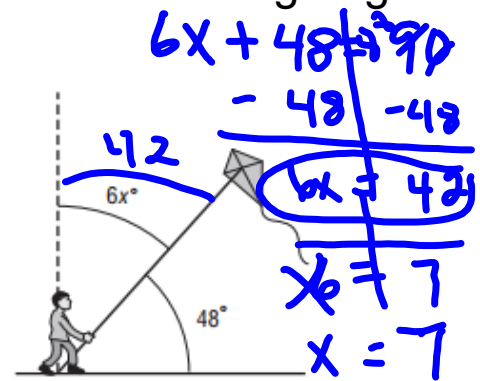
$$x + 102 = 180$$

$$\begin{array}{r} 180 \\ - 102 \\ \hline 78 \end{array}$$

$$5x = 45$$

$$x = 9$$

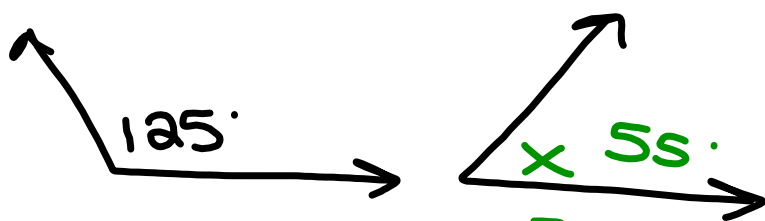
2) Find the missing angle:



$$5x = 45$$

$$x = 9$$

Supp. = 180°






$$\begin{array}{r} 125 + x = 180 \\ -125 \quad | \quad -125 \\ \hline \quad \quad | \quad 55 \end{array}$$

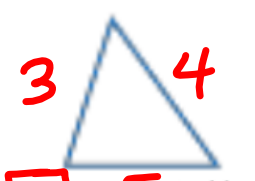
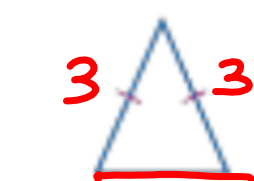
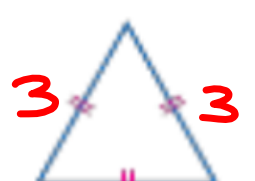
Classifying Triangles- Notes

You can classify triangles by their angle measures:



 all acute angles acute triangle	 1 right angle right triangle	 1 obtuse angle obtuse triangle
---	--	---

You can classify triangles by their sides:

 <p>no congruent sides</p> <p>scalene triangle</p>	 <p>at least 2 congruent sides</p> <p>isosceles triangle</p>	 <p>3 congruent sides</p> <p>equilateral triangle</p>
---	---	--

You try!



Classify this triangle by angle measure: Right
Classify this triangle by sides: Scalene



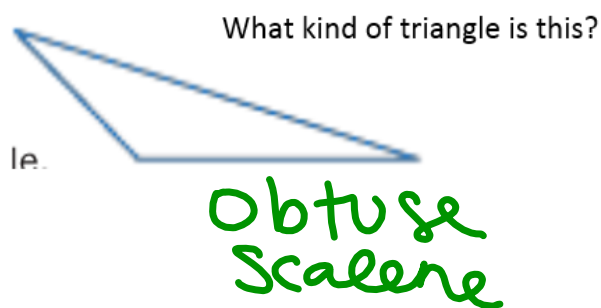
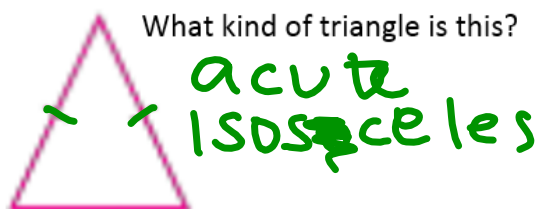
What kind of triangle is this?

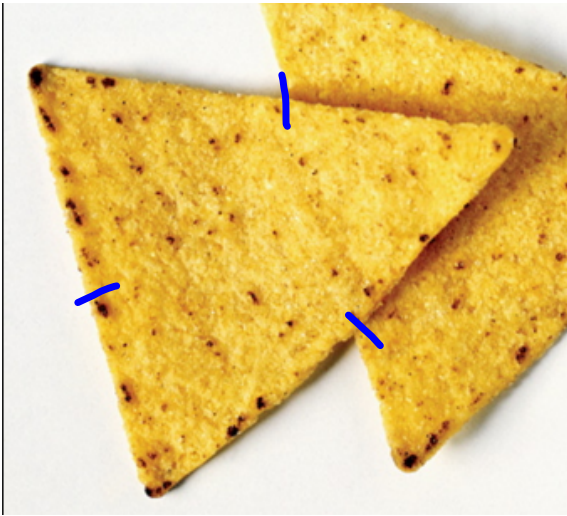
acute
Equilateral



What kind of triangle is this?

Right
Scalene





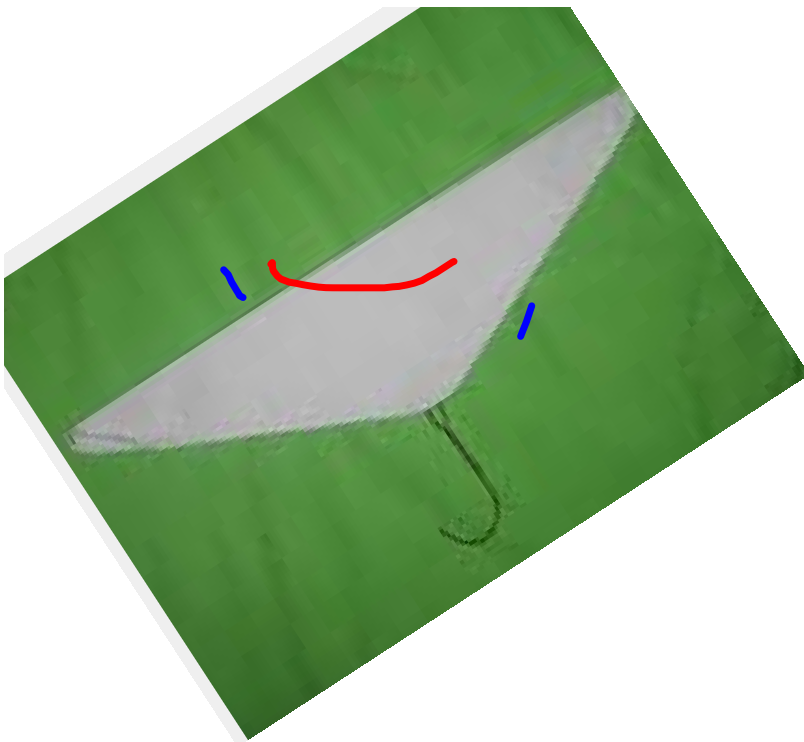
e, A



I, A



R, S



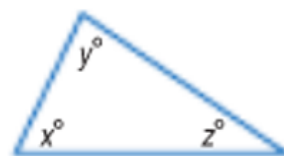
I, O

Angles of a Triangle- Notes

Words The sum of the measures of the angles of a triangle is 180° .

Algebra $x + y + z = 180$

Model

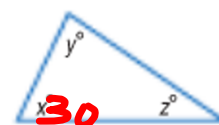


Every triangles angles should all add to be 180° !

~~180~~
$$\begin{array}{r} 9 \\ 9 \\ 9 \\ \hline 180 \\ 2 \end{array}$$

Angles of a Triangle

Words The sum of the measures of the angles of a triangle is 180° .

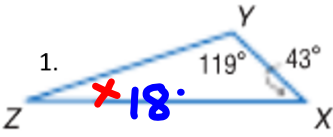
Model

Algebra $x + y + z = 180$

Every triangles angles should all add to be 180 !

Remember $m\angle$ = measure of angle

$m\angle x$

1.  Find the $m\angle Z$

$$x + 119 + 43 = 180$$

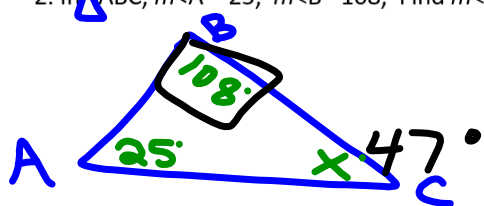
Can you classify this triangle?

obtuse
Scalene

~~$$x + 162 = 180$$
$$-162 \quad -162$$~~

$$x = 18^\circ$$

2. In $\triangle ABC$, $m\angle A = 25$, $m\angle B = 108$, Find $m\angle C$



Can you classify this triangle?

obtuse
Scalene

$$x + 108 + 25 = 180$$

$$\begin{array}{r} -25 \\ -25 \end{array}$$

$$\begin{array}{r} x + 108 = 155 \\ -108 \\ -108 \end{array}$$

$$x = 47^\circ$$

3.



Find x:

Can you classify this triangle?

Acute
equilateral

$$\begin{array}{r} x + 60 + 60 = 180 \\ x + 120 = 180 \\ - 120 \quad - 120 \\ \hline \end{array}$$

4.**

Find the missing angles:

$x = 70$

$70 + 2 = 72$

MathBits.com

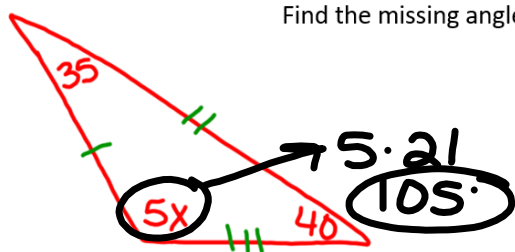
Can you classify this triangle?

Scalene
acute

$$\begin{array}{r}
 x + x + 2 + 38 = 180 \\
 2x + 40 = 180 \\
 - 40 \quad - 40 \\
 \hline
 2x = 140 \\
 \frac{2x}{2} = \frac{140}{2} \\
 x = 70
 \end{array}$$

5.

Find the missing angle



Can you classify this triangle?

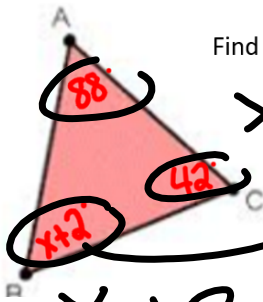
Scalene
Obtuse

$$5x + 40 + 35 = 180$$

$$\begin{array}{r} 5x + 75 = 180 \\ -75 \quad -75 \end{array}$$

$$\begin{array}{r} 5x = 105 \\ \underline{5} \quad \underline{5} \\ x = 21 \end{array}$$

6.



Find the missing angle

$$x+2+42$$

$$x+2=50$$

$$x+2+42+88=180$$

$$x+132=180 \quad x=48$$

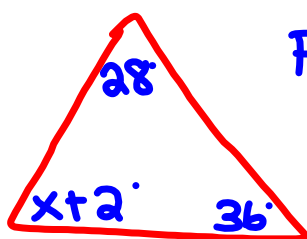
$$x-132=\underline{\underline{-132}}$$

Can you classify the triangle?

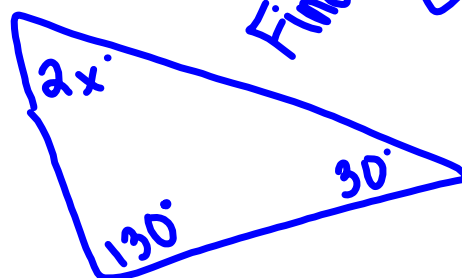
$x=48$ Scalene
acute

Homework!

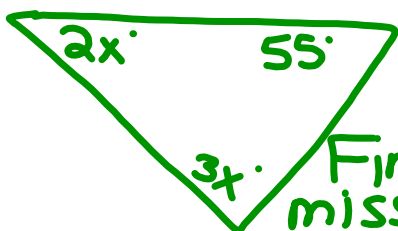
①

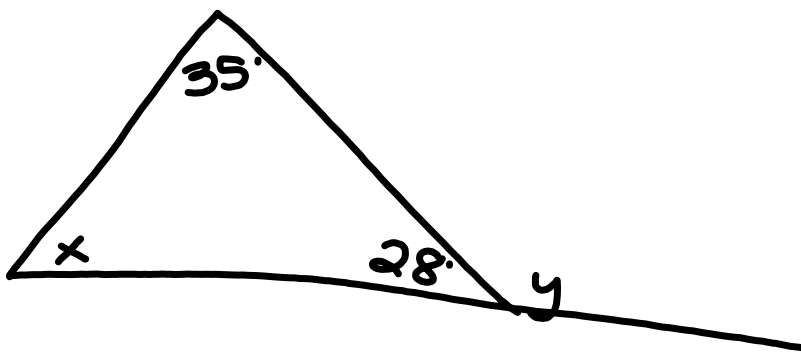
Find missing \angle

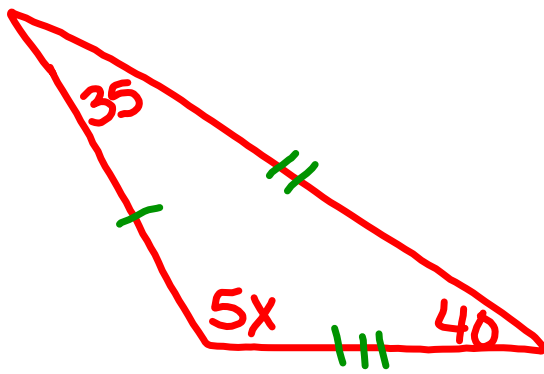
②

Find missing \angle

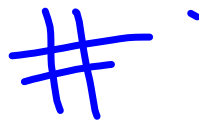
③

Find missing \angle





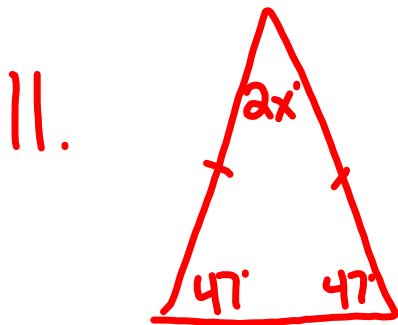
Sit silently for the news



.

Today: Practice

Come up and get every 2 problems checked





A
E

1. Classify this triangle



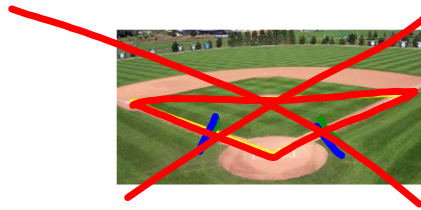
A
I

2. Classify this triangle



R
S

3. Classify this triangle



I
O

4. Classify this triangle



R
S

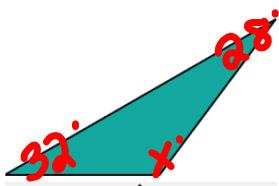
5. Classify this triangle



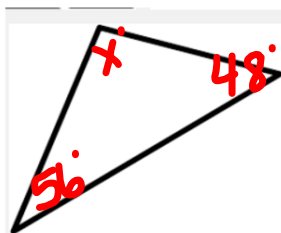
R
S

6. Classify this triangle

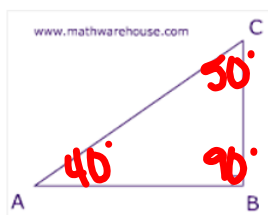
7.



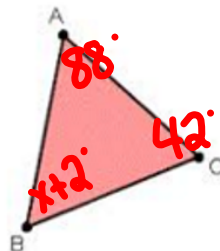
8.



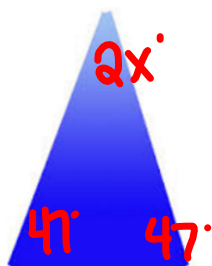
9.



10.



11.



12.

